

NOBLE 3032

1.28 GPF SENSOR OPERATED CONCEALED FLUSH VALVE FOR WC

SPECIFICATIONS

Touch free electronic flush valve for water closet. Solid brass valve body with heavy-duty 10" x 7" stainless steel AISI316 panel complete with tamper proof screws for increased vandal protection.. Automatic infrared sensor activated with self-adjusting detection range. Features a manual or piezo

override push button with anti-block feature. Concealed installation with 1" angle stop and 1.5" vacuum breaker set and 6 second delay-in time to replace unwanted flushing. Powered by a 9V battery or 9V transformer. Auto-adjustable sensor range which adapts to the site conditions. Flushing duration and other settings are adjustable by remote control. Includes an adjustable tail piece connection. Self-cleaning piston mechanism complete with debris screen and solenoid valve. ADA Compliant. Standard: ASSE 1037-1990 and CSA B125.3-2012

PRODUCT AT A GLANCE

Installation	Concealed flush valve with 1" angle stop and 1.5" vacuum breaker set
Recommended Pressure	0.1-8.0 bar / 14.50-116 PSI
Power Supply	9V Battery or 9V transformer
Panel	Heavy-duty 10" x 7" stainless steel AISI316 panel complete with tamper proof screws for increased vandal protection.
Connection	Spud coupling and flange for top or rear spud connection
Automatic Hygiene Flush	Optional feature after 24 hours of inactivity
Piston valve	Self cleaning with 360° filter screen
Override Feature	Manual button or Piezo touch with anti-block feature
Flush cycle	1.28 GPF

ORDERING INFORMATION

MODEL	CODE	POWER	ADDITIONAL FEATURES
NOBLE 3032	460700	9V Battery	Manual override push button with anti-block feature.
NOBLE 3032 E	460710	9V transformer	
NOBLE 3032 P	460720	9V Battery	Piezo override push button with anti-block feature.
NOBLE 3032 PE	460730	9V transformer	

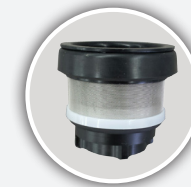
OPTIONS

OPTION	CODE
Remote control	07100005



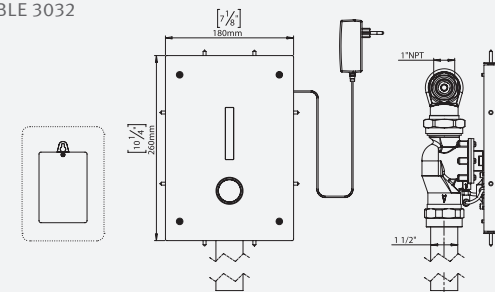
NOBLE 3032

NOBLE 3032 P

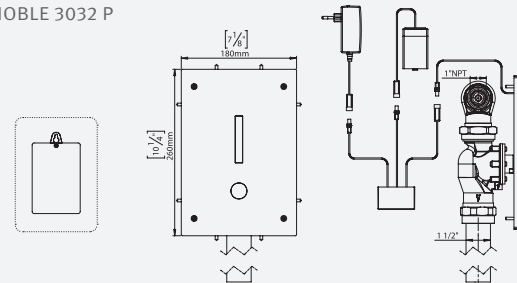


PISTON VALVE

NOBLE 3032



NOBLE 3032 P



LEED RATING



ADA DESIGNED



HYGIENE FLUSH



MAXIMIZES HYGIENE



GERM FREE



ROBUST BRASS BODY



ADJUSTABLE SETTINGS



EASY TO INSTALL



777 Passaic Avenue
Clifton NJ, 07012
USA: sternusa@sternfaucets.com
International: info@sternfaucets.com
Toll Free: 1-800-4364410
www.sternfaucets.com